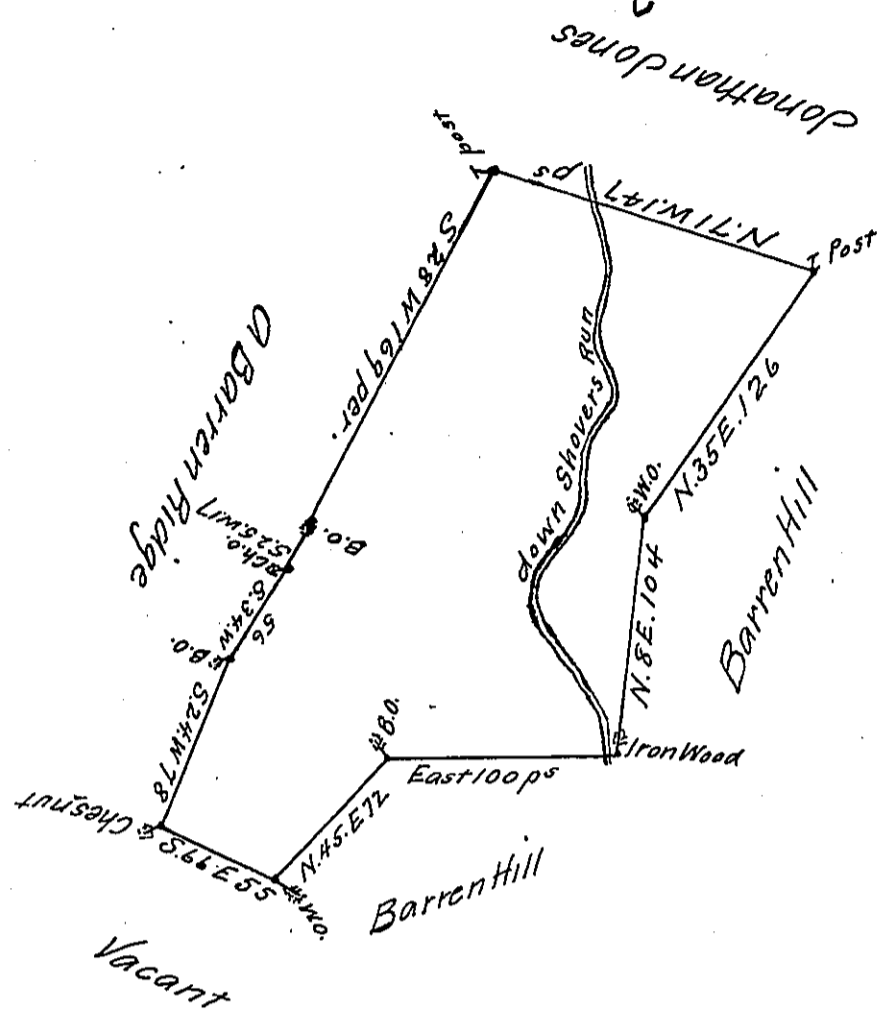


C 222 - 290



A Draught of a Tract of Land Situate on Shovers Run in the County of Cumberland containing Two Hundred and thirty eight Acres and the usual allowance of Six Acres p<sup>ct</sup> for Roads &ca, Surveyed the first day of October 1766 for Samuel Wilson in pursuance of an Order dated the first day of August 1766. N<sup>o</sup> 184.

p Richard Tea Dep<sup>y</sup> Survey<sup>r</sup>.

IN TESTIMONY that the above is a copy of the original remaining on file in the Department of Internal Affairs of Pennsylvania, made conformably to an Act of Assembly approved the 16th day of February, 1833, I have hereunto set my Hand and caused the Seal of said Department to be affixed at Harrisburg, this Twenty Sixth day of May 1910

*Henry Howell*  
Secretary of Internal Affairs.